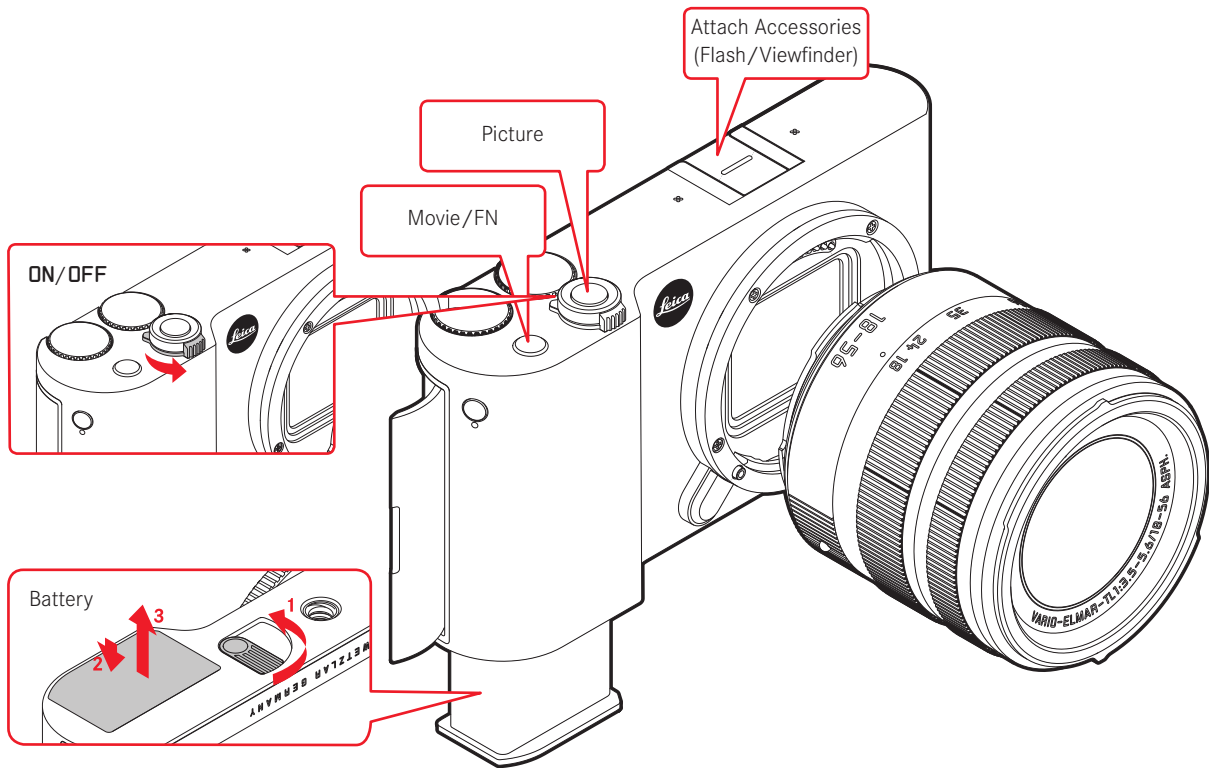
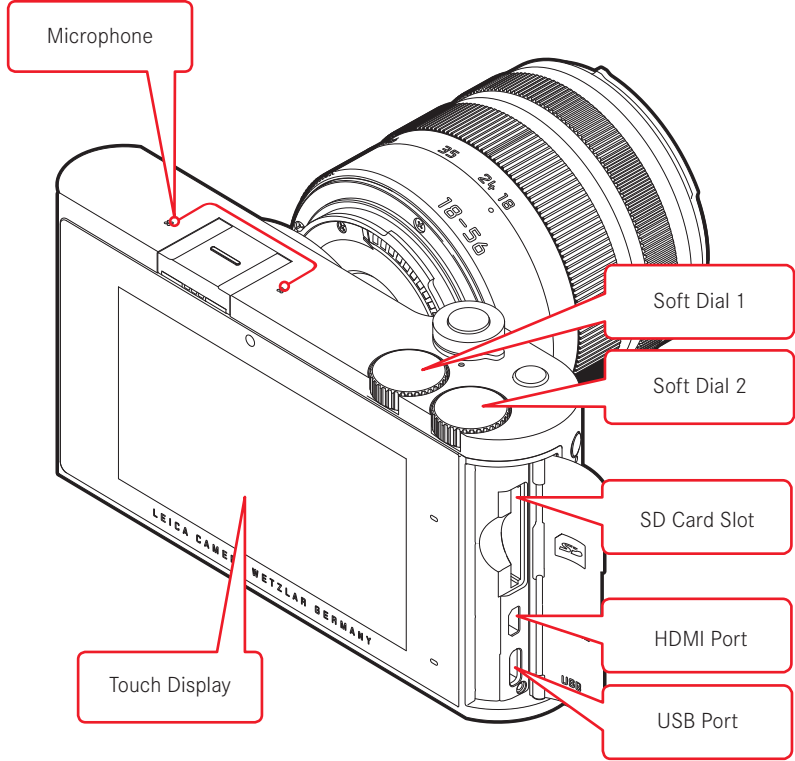




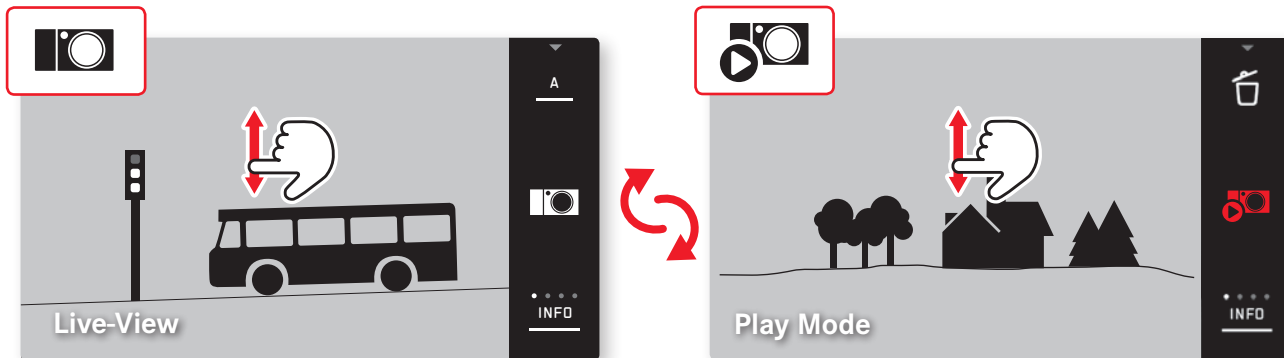
# **LEICA TL2**

QUICK-START-GUIDE

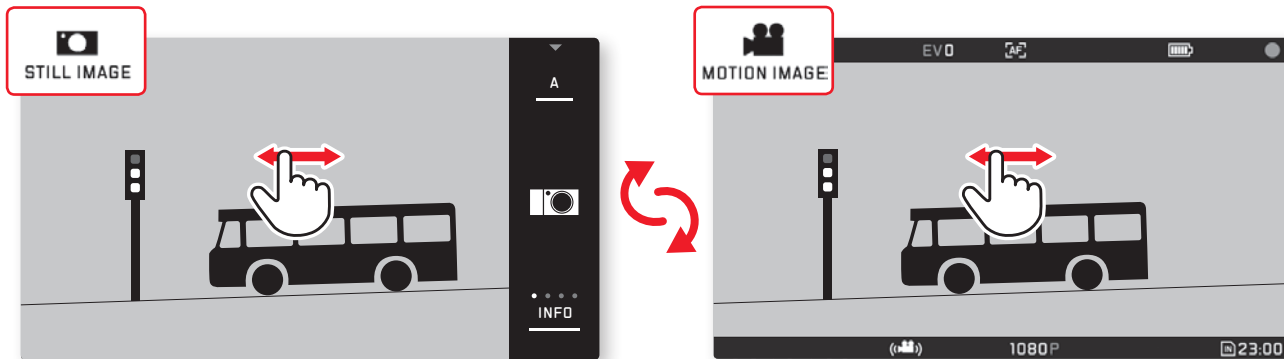




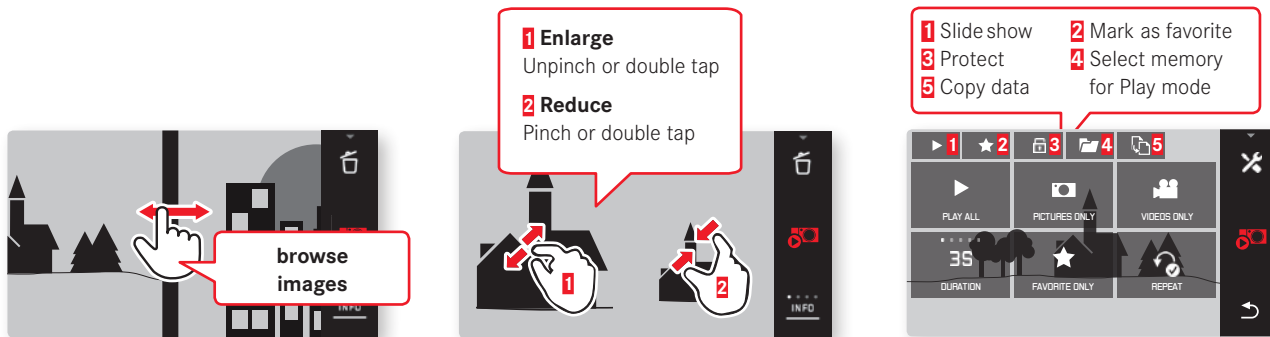
## SWITCHING BETWEEN PICTURE AND PLAY MODES



## SWITCHING BETWEEN PICTURE AND VIDEO PREVIEW MODES

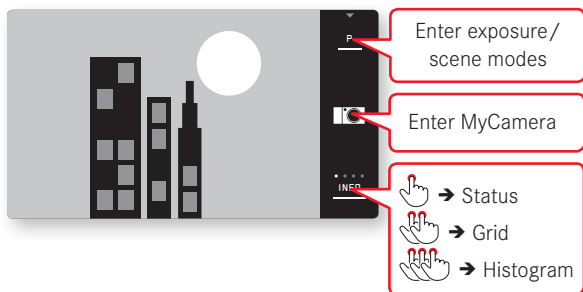


## PLAY MODE FUNCTIONS



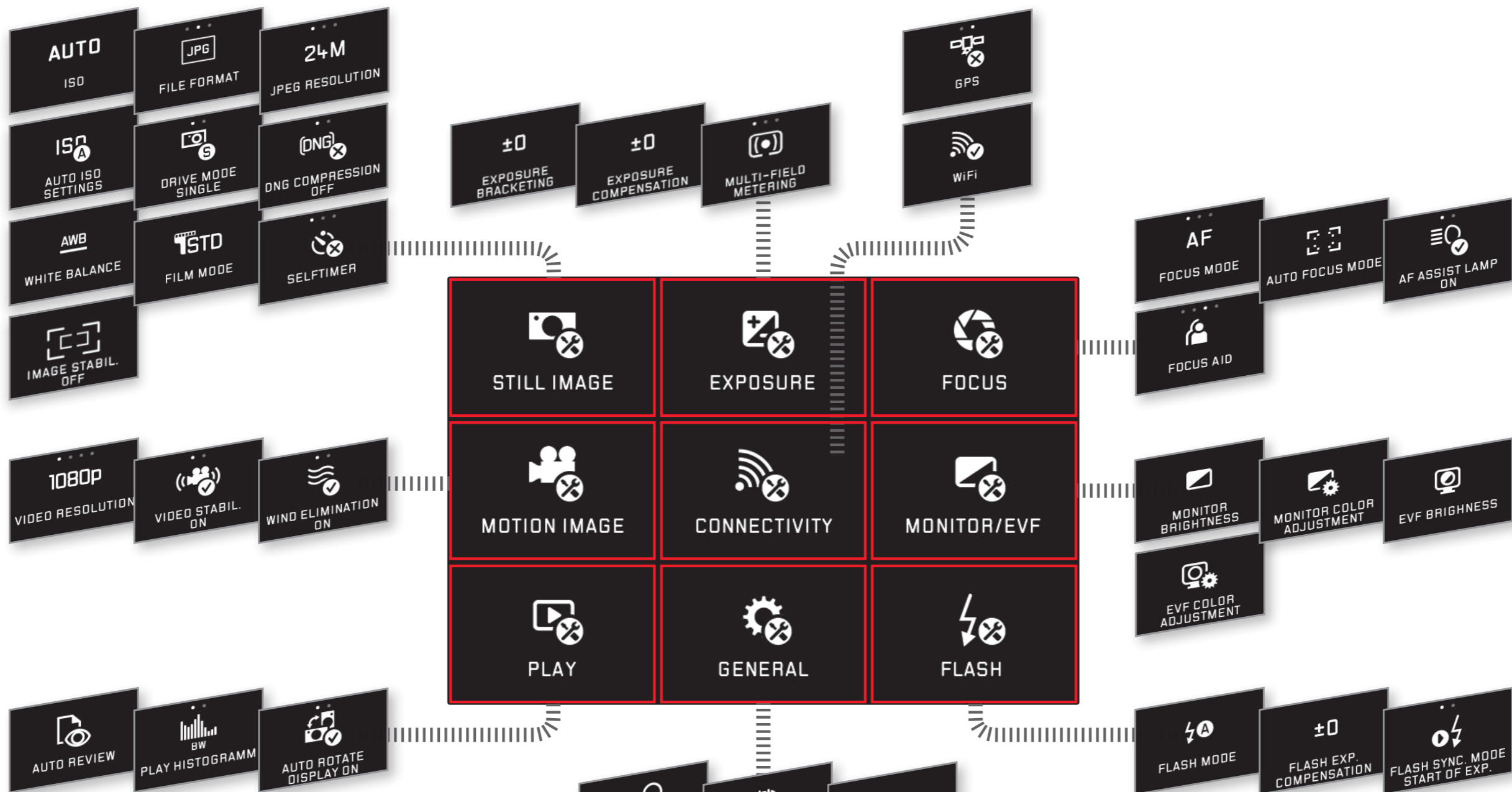
## MENU FUNCTIONS

### START SCREEN

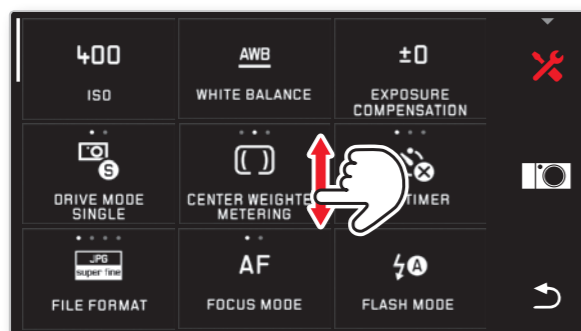


### MYCAMERA MENU

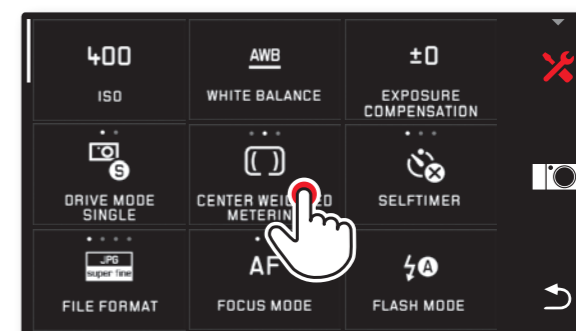




**NAVIGATING IN MENUS**



**TOUCH TO ENTER A MENU ITEM'S SUBMENU/CHANGE SETTINGS**



## SETTING UP WIFI

